

News

Articles

. Mind & Brain

. Plants & Animals

. Earth & Climate

. Space & Time

. Matter & Energy

. Computers & Math

Videos

[Print](#) [Email](#) [Bookmark](#)

Images

Books

Schizophrenia And Manic-depressive Disorder: Genetic Variant Impairs Communication Within Brain

ScienceDaily (May 1, 2009) — For some time now it has been known that certain hereditary factors enhance the risk of schizophrenia or a manic-depressive disorder. However, just how this occurs had remained obscure. Researchers at the Zentralinstitut für Seelische Gesundheit in Mannheim, Heidelberg University and Bonn University are now able to answer this question, at least for one common genetic variant: this impairs the interoperation of certain regions of the brain.

See also: The study is to appear on 1st May in the journal *Science*. It will also be suited to provide fresh stimuli for the search for cures.

Health & Medicine

- [Nervous System](#)
- [Psychology Research](#)
- [Personalized Medicine](#)

Mind & Brain

- [Psychiatry](#)
- [Bipolar Disorder](#)
- [Disorders and Syndromes](#)

Reference

- [Psychosis](#)
- [Sleep deprivation](#)
- [Dopamine hypothesis of schizophrenia](#)
- [Adult attention-deficit disorder](#)

The scientists examined test persons with whom a certain genetic trait had undergone a characteristic mutation. A year ago, a research team had demonstrated that this mutation was, amongst other things, associated with an enhanced risk of schizophrenia. In addition to this, people carrying this variant were more susceptible to a bipolar malady also known as a manic-depressive disorder. In the present case, however, our results were based on examinations of 115 healthy subjects.

"At this point, no-one had the slightest idea of what effect the genetic variant we had observed might have on the brain", declares Professor Dr. Andreas Meyer-Lindenberg. The director of the Zentralinstitut für Seelische Gesundheit was the initiator of the study. "We examined our test subjects in magnetic resonance

tomographs, which reveal how the various areas of the brain interoperate".

Result: persons suffering from this high-risk genetic variant exhibited a change in the communication between their dorsolateral prefrontal cortex (DLPFC) and other regions of their brains. The DLPFC plays an active role in the working

Ads by Google

[Advertise here](#)

03 Balance

The Perfect Omega Balance Fight Against Brain Inflammation
www.NewportNutritionals.com

A new way to BEAT Autism

Latest research on great autism treatment now available for all
www.FreeAutismReport.com

Bipolar: How to Get Happy

Overcome The Downside of Bipolar Disorder By Finding Its Strengths.
Bipolar-Disorder.DaVinciMethod.com

9th World Congress of

Biological Psychiatry • 28 June - 2 July 2009 • Paris, France
www.wfsbp-congress.org/

3 Steps To Conquer ADD

Warning! Don't Take Any Attention Deficit Disorder Drug. Read This.
AttentionDeficit-Disorder.net

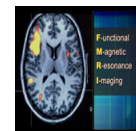
Related Stories

[Enzyme Linked To Mania And Schizophrenia Impairs Higher Brain Functions](#) (Nov. 5, 2004) — Overactivity of protein kinase C (PKC), an enzyme that is implicated in bipolar disorder and schizophrenia, markedly impairs higher brain functions in animals, according to a Yale study published ... [> read more](#)

[Genetic Variation Affects Brain Region Dysfunctional In Schizophrenia](#) (May 22, 2008) — New data have indicated that in healthy individuals, variation in a gene known as AKT1 affects the structure and function of part of the brain that is dysfunctional in individuals with schizophrenia. ... [> read more](#)

Just In:

Science Video News



Lost And Found

Cognitive scientists ran an experiment to understand how the brain searches for an object with a known shape. They asked subjects to track the ... [> full story](#)

- ▶ [Scientists Discover New Genes Linked To Rheumatoid Arthritis](#)
- ▶ [Neuroendocrinologists Unlock Chemical Trigger to Puberty](#)
- ▶ [Kinesiologists Design Tiny Treadmill To Help Balance Baby Steps In Downs Syndrome Infants](#)
- ▶ [more science videos](#)

Breaking News

... from NewsDaily.com

- ▶ [Trial by fire: New antibody method gets big test](#)

- ▶ [WHO says existing vaccine little use](#)

memory and diverse "higher" cerebral functions. It comprises a right-hand and a left-hand fraction, and it was the communication between these two halves which had become impaired. In contrast to this, the link between the DLPFC and the hippocampus, a further region of the brain of importance for the memory, was improved. Both these noteworthy phenomena had already been shown to exist in patients suffering from schizophrenia.

Moreover, carriers of this high-risk gene also displayed an enhanced linkage between the amygdala and a number of other cerebral regions. The amygdala, also known as the "almond", plays an active role in the manner in which we cope with our emotions. "Which is why we have related this phenomenon to the bipolar impairment, which is, as we know, characterised by erratic mood swings", Professor Dr. Dr. Henrik Walter of Bonn University explains.

Over 100 years ago, the German psychiatrist Carl Wernicke had already suspected that schizophrenia might be attributable to impaired interoperation between different regions of the brain. The new study, employing an innovative combination of modern genetics and cerebral imaging, has confirmed this suspicion.



The mutated gene contains the building plan for a protein whose precise function is still not clear. Diverse study groups worldwide are currently engaged in finding answer to this question – amongst other reasons, because this could provide approaches to novel treatments. "It is impressive that using modern methods we are able to trace such subtle genetic effects in the living brain", says Professor Dr. Peter Kirsch, head of the Study Group for Cerebral Imaging in Mannheim. Carriers of this variant, incidentally, must not be worried that they are destined to suffer from schizophrenia or bipolar impairment. "This genetic variant plays only a minor role in these disorders", says Dr. Christine Esslinger from the Zentralinstitut für Seelische Gesundheit reassuringly. Other factors must at all events become involved before a disorder such as this breaks out.

In Mannheim, apart from Professor Meyer-Lindenberg, Dr. Christine Esslinger and Professor Kirsch, Professor Dr. Marcella Rietschel has also played a critical part in this study. In Bonn, the participation of Privatdozent Dr. Sven Cichon must be emphasised. The study has been supported by the Federal Ministry for Education and Research within the framework of the National Genome Research Network. The German Research Foundation (DFG) has also supported its work.

Journal reference:

- Christine Esslinger, Henrik Walter, Peter Kirsch, Susanne Erk, Knut Schnell, Claudia Arnold, Leila Haddad, Daniela Mier, Carola Opitz von Boberfeld, Kyeon Raab, StephanieH. Witt, Marcella Rietschel, Sven Cichon, Andreas Meyer-Lindenberg. Neural Mechanisms of a Genomewide Important Psychosis Variant. *Science*, 1.5.2009

Adapted from materials provided by [University of Bonn](#), via [EurekAlert!](#), a service of AAAS.

Email or share this story:  

Need to cite this story in your essay, paper, or report? Use

[Schizophrenia Gene Variant Linked To Risk Traits](#) (Aug. 13, 2004) — Researchers at the NIH's National Institute of Mental Health (NIMH) have identified a relationship between a small section of one gene, the brain chemical messenger glutamate, and a collection of ... > [read more](#)

[Possible Genetic Link To Schizophrenia Identified](#) (Feb. 9, 2007) — Several neurological and psychiatric disorders, including schizophrenia, are associated with changes in the brain that affect nerves that communicate with each other using dopamine. One protein that ... > [read more](#)

[Yale Findings Hold Promise For Stopping Progression Of Bipolar Disorder](#) (Feb. 1, 2006) — Changes in the brain that are important indicators of bipolar disorder are not prominent until young adulthood and are reduced in persons taking mood-stabilizing ... > [read more](#)

against new flu

- » [New flu virus may be a real mongrel: study](#)
- » [World fights new flu virus with latest science](#)
- » [NASA to begin layoffs as shuttle retirement nears](#)
- » [more science news](#)

In Other News ...

- » [Pakistan battles Taliban; pact hangs in balance](#)
- » [Mexico breathes easier in flu epidemic](#)
- » [Boston Globe could file shutdown notice Monday](#)
- » [Obama to meet Afghan, Pakistan leaders on strategy](#)
- » [Mexico breathes easier in flu epidemic](#)
- » [Pentagon chief to reassure Saudis on Iran outreach](#)
- » [Obama to roll out international tax proposals](#)
- » [U.S. says Islamist militancy a concern in Bangladesh](#)
- » [more top news](#)

Copyright Reuters 2008. See [Restrictions](#).

Free Subscriptions ... from [ScienceDaily](#)

Get the latest science news with our free email newsletters, updated daily and weekly. Or view hourly updated newsfeeds in your RSS reader:

- » [Email Newsletters](#)
- » [RSS Newsfeeds](#)

Feedback ... we want to hear from you!

Tell us what you think of the new ScienceDaily -- we welcome both positive and negative comments.

one of the following formats:

- APA University of Bonn (2009, May 1).
Schizophrenia And Manic-depressive Disorder:
Genetic Variant Impairs Communication Within
Brain. *ScienceDaily*. Retrieved May 4, 2009,
from [http://www.sciencedaily.com/
releases/2009/04/090430144703.htm](http://www.sciencedaily.com/releases/2009/04/090430144703.htm)
- MLA University of Bonn (2009, May 1).
Schizophrenia And Manic-depressive Disorder:
Genetic Variant Impairs Communication Within
Brain. *ScienceDaily*. Retrieved May 4, 2009,
from [http://www.sciencedaily.com/
releases/2009/04/090430144703.htm](http://www.sciencedaily.com/releases/2009/04/090430144703.htm)

Have any problems using the site? Questions?

Your Name:

Your Email:

Comments:

Search ScienceDaily

Number of stories in archives: 44,032

Find with keyword(s):

Enter a keyword or phrase to search ScienceDaily's archives for related news topics, the latest news stories, reference articles, science videos, images, and books.

Click button to submit feedback:

Ads by Google

[Advertise here](#)

bipolar

Alternative Mental Health Care It
will change your mind and life
www.earthhouse.org

[About This Site](#) | [Editorial Staff](#) | [Awards & Reviews](#) | [Contribute News](#) | [Advertise With Us](#) | [Privacy Policy](#) | [Terms of Use](#)

Copyright © 1995-2009 ScienceDaily LLC — All rights reserved — Contact: editor@sciencedaily.com